

## MCP Outcomes Appendix 1

# Dudley Multi-Specialty Community Provider Outcomes Framework



### Principles

- The entire body of the MCP Outcomes will be structured across 3 schedules:

#### 1. Pay For Performance Outcomes

These outcomes will be incentivised by apportioning a percentage of the overall contract value to the achievement of the targets. Where there are multiple targets for any given outcome group, then the Pay for Performance (P4P) value will be equally split across the individual items. For example The Increased Childhood Vaccination Outcome has 14 individual metrics and targets. Therefore 1 item is allocated one 14<sup>th</sup> of the incentive payment for the overall Outcome.

Some of the Outcomes are Population Health, Patient Reported Outcomes/Experience or measures of broader system outcomes. It is recognised that some of these outcomes require a systems set up and baseline period in order to function as a valid and reliable measure. Therefore, these type of metrics are afforded set-up periods to enable the MCP time to establish effective data collection methodologies and systems.

For the purposes of illustration the P4P amount suggested in this document is 10% of the MCP contract value.

#### 2. Quality and Assurance Outcomes.

These are a range of outcomes that are not incentivised through the P4P arrangement. They will be required to be published and this suite of measures will also act as a repository from which measures can be rotated into the P4P scheme. Furthermore these outcomes will provide a 'bellwether' assessment of MCP performance over a number of years.

#### 3. The Operational Standards and National Quality Requirements within the National NHS Contract will also included but not as part of the P4P scheme.

These standards will be applied contractually according to the NHS Standard Contract with all sanctions included. NHS England may also produce a basket of outcome indicators of which a certain number could be mandated.

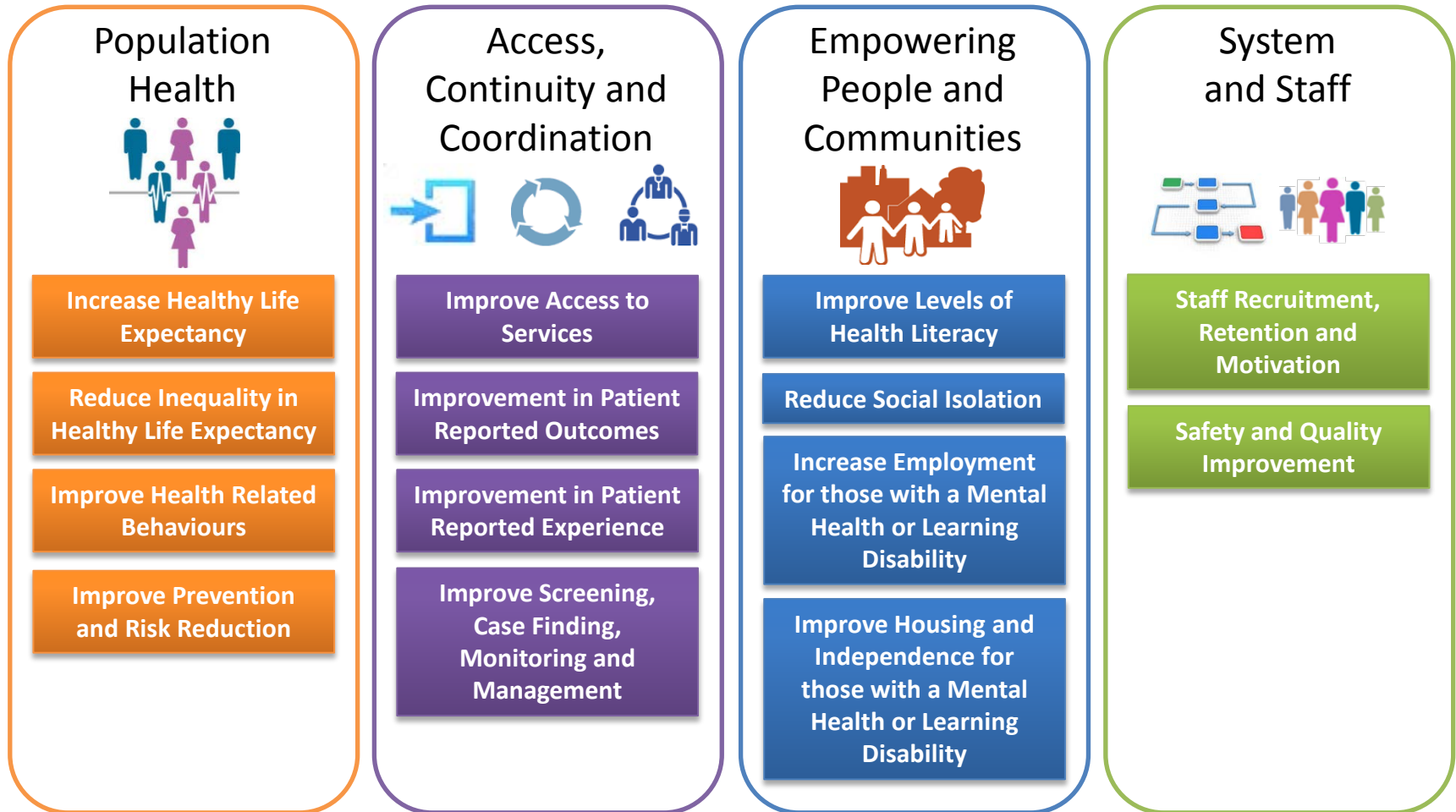
# Dudley Multi-Specialty Community Provider Outcomes Framework

---

## Principles continued

- This document focuses on the P4P Schedule. For the full schedule of outcomes see Appendix 2.
- The P4P scheme will be underpinned by a technical specification currently being developed.
- This draft of the Outcomes was compiled following extensive consultation throughout 2016. Feedback on the previous version of MCP Outcomes Framework was submitted by some current Providers of healthcare services, the Office of Public Health Dudley, COBIC Outcome Consultants, the Midlands and Lancashire CSU Strategy Unit and ICF International Consultancy. The draft P4P schedule of the Outcomes has been constructed in response to this feedback.
- From page 8 onwards is an example of how the pay for performance scheme could work. This example is based on 10% of the contract value allocated to the scheme.

# Dudley Multi-Specialty Community Provider Outcomes Framework

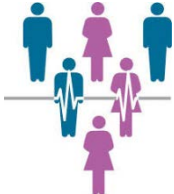


# Dudley Multi-Specialty Community Provider Outcomes Framework



## Payment for Performance



 <b>Population Health</b>	<b>Increase in Healthy Life Expectancy</b>	<p>Increase in Healthy Life Expectancy (the proportion of life that people spend in good health) with separate targets by gender. Currently collected as part of the Census data (Office of National Statistics). Incentives in the first 2 years for data collection / methodology set up for yearly reporting and establishing baseline. From year 3 to year 5 the target will be a statistically significant increase on the baseline by year 5.</p>
	<b>Reduce Inequality in Healthy Life Expectancy</b>	<p>Decrease in the Slope Index of Healthy Life Expectancy. Therefore reduce the difference in Healthy life Expectancy between the lowest and highest expectancy at lower super output level. Currently collected as part of the Census data (Office of National Statistics). As above, incentives in the first 2 years for data collection / methodology set up for yearly reporting and establishing baseline. From year 3 to year 5 the target will be a statistically significant increase on the baseline by year 5.</p>
	<b>Improve Health Related Behaviours</b>	<p>Reduction in the following Lifestyle health problems where Dudley are an outlier nationally:</p> <ul style="list-style-type: none"> <li>• Childhood and Adult Obesity</li> <li>• Smoking Prevalence</li> <li>• Admissions for Alcohol Related Conditions</li> </ul>
	<b>Improve Prevention and Risk</b>	<p>Improve Childhood Vaccination Rates (currently collected within the Public Health Outcomes Framework). A Statistically significant incremental increase in vaccination rates over the first 5 years of the contract.</p> <p>Improve Flu vaccination coverage for 65 years and above age group (target detail as above).</p>

# Dudley Multi-Specialty Community Provider Outcomes Framework

## Payment for Performance



### Access, Continuity and Coordination

#### Improve Access to Services

- Improvement in the average referral to treatment time wait (in weeks) by specialty.
- Primary Care – increased access per 1,000 population and Same Day access for under 5 year olds
- Improvement in waiting times for patients on Cancer pathways
- Increase in patients accessing Psychological Therapies.

#### Improvement in Patient Reported Outcomes

- Adult Social Care Outcomes Toolkit (ASCOT) SCT4.
- Adult Social Care Outcomes Toolkit for Carers(ASCOT) SCT4.
- Warwick and Edinburgh Mental Wellbeing Scale (WEMWBS)

#### Improvement in Patient Reported Experience

- Improvement in positive responses to GP Patient Survey (Access Questions)
- CollaboRATE patient experience reporting tool.

#### Improve Screening, Case Finding, Monitoring and Management

A range of Outcomes within the following clinical areas;

- Cardiology
- Heart failure
- Diabetes and Endocrinology
- Learning Disabilities
- Mental Health
- Nephrology
- Respiratory Medicine
- Vascular Conditions
- Palliative Care
- A suite of general measures for Long Term Conditions

# Dudley Multi-Specialty Community Provider Outcomes Framework

Payment for Performance



## Empowering People and Communities

### Improve Levels of Health Literacy

All Aspects of Health Literacy Scale (AAHLS) Kings College London Sampling and data capture methodologies developed ready to deploy for year 2. Baseline Surveys in year 2, thereafter – statistically significant improvements year on year.

### Reduced Social Isolation

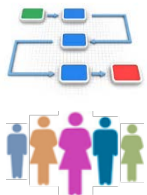
% adults with MH/LD in paid employment ASCOF 1E &F. statistically significant improvements year on year.

### Employment

% Adults with MH/LD in paid employment ASCOF 1E &F. Statistically significant improvements year on year.

### Housing & Independence

% Adults with MH/LD living independently ASCOF 1G &H  
Improved independent living for those with a Learning Disability or Mental Health Condition



### System and Staff

#### Staff Recruitment, Retention and Motivation

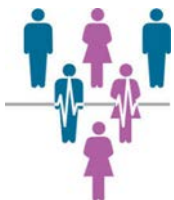
- NHS Staff Survey. Increase in the proportion of staff who agree or strongly agree that they are able to deliver the care they aspire to (NHS Staff Survey Q 9C). Baseline year, thereafter – statistically significant improvements year on year.
- NHS Workforce Stability Index Reported through NHS Electronic Staff Records Reporting. Baseline year, thereafter – statistically significant improvements year on year.

#### Safety and Quality Improvement

- Hospital Acquired Infection Rates. Reduced rates of Clostridium Difficile, MRSA, MSSA.
- Emergency Admissions. Reduced Direct Standardised Rates for Ambulatory Care Sensitive Admissions.
- Prescribing. A range of prescribing outcomes that demonstrate safer, more appropriate and more efficient prescribing in Primary Care.

# Dudley Multi-Specialty Community Provider Outcomes Framework

## Payment for Performance



Population Health		Year 1	Year 2	Year 3	Year 4	Year 5
P4P-PH1	Improved Healthy Life Expectancy	£ 459,375	£ 612,500	£ 765,625	£ 826,875	£ 888,125
P4P-PH2	Reduced Inequality in Life Expectancy	£ 459,375	£ 612,500	£ 765,625	£ 826,875	£ 888,125
P4P-PH3a	Reduction in Childhood Obesity Years 4-5	£ 459,375	£ 612,500	£ 765,625	£ 826,875	£ 888,125
P4P-PH3b	Reduction in Childhood Obesity Years 10-11	£ 459,375	£ 612,500	£ 765,625	£ 826,875	£ 888,125
P4P-PH3c	Reduction in Smoking Prevalence	£ 459,375	£ 612,500	£ 765,625	£ 826,875	£ 888,125
P4P-PH3d	Reduction in admissions for Alcohol related Conditions	£ 459,375	£ 612,500	£ 765,625	£ 826,875	£ 888,125
P4P-PH4a	Increased Childhood Vaccination coverage	£ 459,375	£ 612,500	£ 765,625	£ 826,875	£ 888,125
P4P-PH4b	Increased Flu Vaccination coverage 65 years and over Immunised 1st Sep to 31st Jan	£ 459,375	£ 612,500	£ 765,625	£ 826,875	£ 888,125
Total		£ 3,675,000	£ 4,900,000	£ 6,125,000	£ 6,615,000	£ 7,105,000



# Dudley Multi-Specialty Community Provider Outcomes Framework

## Payment for Performance



Access, Continuity & Coordination		Year 1	Year 2	Year 3	Year 4	Year 5
P4P-ACC1	Improvement in the average referral to treatment time wait (in weeks) by specialty.	£ 331,104	£ 310,687	£ 290,271	£ 290,270	£ 290,270
P4P-ACC2	Reduction of the Maximum wait time from referral to diagnostic/treatment Community based services.	£ 331,104	£ 310,687	£ 290,271	£ 290,270	£ 290,270
P4P -ACC3a	Improvement in Patient Reported Outcomes	£ 331,104	£ 310,687	£ 290,271	£ 290,270	£ 290,270
P4P -ACC3b	Improvement in Patient Reported Outcomes	£ 331,104	£ 310,687	£ 290,271	£ 290,270	£ 290,270
P4P -ACC3c	Improvement in Patient Reported Outcomes	£ 331,104	£ 310,687	£ 290,271	£ 290,270	£ 290,270
P4P-ACC4	Improvement in Patient Reported Experience	£ 331,104	£ 310,687	£ 290,271	£ 290,270	£ 290,270
P4P-ACC5	Improvement in Patient Reported Experience of Primary Care Access	£ 331,104	£ 310,687	£ 290,271	£ 290,270	£ 290,270
P4P-ACC6	Improved Primary Care Access	£ 227,476	£ 227,476	£ 227,476	£ 227,476	£ 227,476
P4P-ACC7a	Improvement in Continuity of Primary Care - Atrial Fibrillation	£ 341,214	£ 341,214	£ 341,214	£ 341,214	£ 341,214
P4P-ACC7b	Improvement in Continuity of Primary Care - Diabetes	£ 909,904	£ 909,904	£ 909,904	£ 909,904	£ 909,904
P4P-ACC7c	Improvement in Continuity of Primary Care -Heart Failure	£ 113,738	£ 113,738	£ 113,738	£ 113,738	£ 113,738
P4P-ACC7d	Improvement in Continuity of Primary Care - Learning Disabilities	£ 113,738	£ 113,738	£ 113,738	£ 113,738	£ 113,738
P4P-ACC7e	Improvement in Continuity of Primary Care - Nephrology	£ 454,952	£ 454,952	£ 454,952	£ 454,952	£ 454,952
P4P-ACC7f	Improvement in Continuity of Primary Care - General	£ 1,364,855	£ 1,364,855	£ 1,364,855	£ 1,364,855	£ 1,364,855
P4P-ACC7g	Improvement in Continuity of Primary Care - Respiratory Medicine	£ 682,428	£ 682,428	£ 682,428	£ 682,428	£ 682,428
P4P-ACC7h	Improvement in Continuity of Primary Care - Vascular	£ 796,166	£ 796,166	£ 796,166	£ 796,166	£ 796,166

# Dudley Multi-Specialty Community Provider Outcomes Framework

## Payment for Performance



<b>Access, Continuity &amp; Coordination</b>		Year 1	Year 2	Year 3	Year 4	Year 5
P4P-ACC8a	Improvement in Coordination of Primary Care - Dementia	£ 227,476	£ 227,476	£ 227,476	£ 227,476	£ 227,476
P4P-ACC8b	Improvement in Coordination of Primary Care - Palliative Medicine	£ 454,952	£ 454,952	£ 454,952	£ 454,952	£ 454,952
P4P-ACC8c	Improvement in Coordination of Primary Care - Diabetes	£ 113,738	£ 113,738	£ 113,738	£ 113,738	£ 113,738
P4P-ACC8d	Improvement in Coordination of Primary Care - General Primary Care	£ 568,690	£ 568,690	£ 568,690	£ 568,690	£ 568,690
P4P-ACC9	Improved Multi-Disciplinary Team Impact	£ 682,428	£ 682,428	£ 682,428	£ 682,428	£ 682,428
P4P-ACC10a	Improved access to Psychological Therapies	£ 331,104	£ 310,687	£ 290,270	£ 290,271	£ 290,270
P4P-ACC10b	Reduction in Mental Health Child Admissions	£ 331,104	£ 310,687	£ 290,271	£ 290,271	£ 290,270
P4P-ACC10c	Reduced Suicide Rate	£ 331,104	£ 310,687	£ 290,271	£ 290,271	£ 290,270
P4P-ACC10d	Reduced Self Harm	£ 331,104	£ 310,687	£ 290,271	£ 290,271	£ 290,270
P4P-ACC11	Reduced Delayed Transfers of Care	£ 331,104	£ 310,687	£ 290,271	£ 290,271	£ 290,270
<b>Total</b>		<b>£ 11,025,000</b>	<b>£ 10,780,000</b>	<b>£ 10,534,999</b>	<b>£ 10,534,998</b>	<b>£ 10,534,997</b>

# Dudley Multi-Specialty Community Provider Outcomes Framework

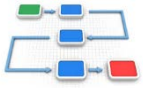
## Payment for Performance



<b>Empowering People &amp; Communities</b>		Year 1		Year 2		Year 3		Year 4		Year 5	
		£		£		£		£		£	
P4P-EPC1	Improved Levels of Health Literacy	£	816,667	£	735,000	£	653,333	£	612,500	£	571,667
P4P-EPC2	Reduced Social Isolation	£	816,667	£	735,000	£	653,333	£	612,500	£	571,667
P4P-EPC3a	Improved Employment level for those with a Learning Disability	£	816,667	£	735,000	£	653,333	£	612,500	£	571,667
P4P-EPC3b	Improved Employment level for those with a Mental Health condition	£	816,667	£	735,000	£	653,333	£	612,500	£	571,667
P4P-EPC4a	Improved Housing for those with a Learning Disability	£	816,667	£	735,000	£	653,333	£	612,500	£	571,667
P4P-EPC4b	Improved Independent Living for people with a Mental Health condition	£	816,667	£	735,000	£	653,333	£	612,500	£	571,667
<b>Total</b>		£	4,900,000	£	4,410,000	£	3,920,000	£	3,675,000	£	3,430,000

# Dudley Multi-Specialty Community Provider Outcomes Framework

## Payment for Performance



System & Staff		Year 1	Year 2	Year 3	Year 4	Year 5
P4P-SS1	Financial Stability	£ 700,000	£ 630,000	£ 560,000	£ 525,000	£ 490,000
P4P-SS2	Improved Staff Motivation	£ 700,000	£ 630,000	£ 560,000	£ 525,000	£ 490,000
P4P-SS3	Increased Workforce Stability	£ 700,000	£ 630,000	£ 560,000	£ 525,000	£ 490,000
P4P-SS4	Reduction in Hospital Acquired Infection rates	£ 700,000	£ 630,000	£ 560,000	£ 525,000	£ 490,000
P4P-SS5a	Reduction in Emergency Admissions	£ 700,000	£ 630,000	£ 560,000	£ 525,000	£ 490,000
P4P-SS5b	Reduction in Emergency Admissions	£ 700,000	£ 630,000	£ 560,000	£ 525,000	£ 490,000
P4P-SS6	Improved Primary Care Prescribing	£ 700,000	£ 630,000	£ 560,000	£ 525,000	£ 490,000
Total		£ 4,900,000	£ 4,410,000	£ 3,920,000	£ 3,675,000	£ 3,430,000

# Dudley Multi-Specialty Community Provider Outcomes Framework

## Payment for Performance

### 5 Year Profile

Theme	Year 1	Year 2	Year 3	Year 4	Year 5
Population Health	£ 3,675,000	£ 4,900,000	£ 6,125,000	£ 6,615,000	£ 7,105,000
Access, Continuity & Coordination	£ 11,025,000	£ 10,780,000	£ 10,535,000	£ 10,535,000	£ 10,535,000
Empowering People & Communities	£ 4,900,000	£ 4,410,000	£ 3,920,000	£ 3,675,000	£ 3,430,000
System & Staff	£ 4,900,000	£ 4,410,000	£ 3,920,000	£ 3,675,000	£ 3,430,000
<b>Total</b>	<b>£ 24,500,000</b>	<b>£ 24,500,000</b>	<b>£ 24,500,000</b>	<b>£ 24,500,000</b>	<b>£ 24,500,000</b>

